



IMPLANTIZE COURSES

ACCREDITATION FOR ATROPHIC MAXILLA
REHABILITATION WITH INDIVIDUALIZED
STRUCTURES

EDUCATION PROGRAM



THE COURSE

The only course that allows you to have the confidence to perform a treatment using ImplanTize.



1+1/2 DAY



12H - THEORETICAL - PRATICAL



LIVE SURGERY



DAY 1

MORNING

Theoretical component

LUNCH

Group

AFTERNOON

Live Surgery



DAY 2

MORNING

Visit to BoneEasy
ImplanTize Training
Diploma delivery

LUNCH

Group

LAYOUT OF IMPLANTIZE COURSES

The ImplanTize course promoted by LMS-JF is a 12-hour theoretical-practical course taught for 1 full day and the following morning

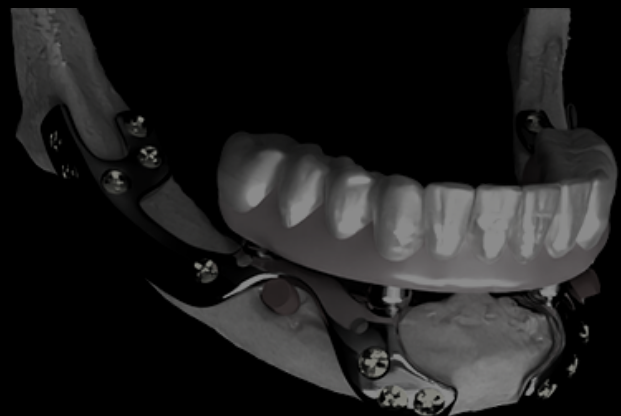
This course has a theoretical component that occupies the morning of the 1st day, a practical component that occupies the morning of the 2nd day and the visualization of a surgery with live transmission made by the trainers after lunch on the 1st day.

At the end of the morning of the 2nd day, we usually visit the BoneEasy facilities with a guided tour by Rui Coelho (BoneEasy CEO). In the practical component, each student places an implant in a printed plastic model.

LAYOUT OF THE THEORETICAL COMPONENT IS ARRANGED AS FOLLOWS:

- Analysis of bone atrofies
- Anatomy of the facial mass
- Solutions adapted to the site to be rehabilitated
- Zygomatic implants
- Short implants
- Inferior Alveolar Nerve deviation
- ImplanTize
 - Basic principles
 - ImplanTize as a short implant and not as a subperiosteal
 - Evolution from Hybrid ImplanTize to Compact
 - MIC concept
 - Surgical technique
 - Technique difficulties
 - Complications
 - Presentation and discussion of clinical cases

- **Prosthetic rehabilitation on individualized implants:**
 - Principles to consider in a total rehabilitation
 - Reverse planning
 - Consequences of inadequate planning
 - Implant /prosthesis connection
 - Temporary prosthesis in immediate loading
- **Production of ImplanTize:**
 - Dentlabsoft – linking software between clinician and BoneEasy
 - Making the implant step-by-step
 - ImplanTize as an implantable medical device
- **Surgical kit and material needed to perform the surgery**





16 COURSES



+ 150 STUDENTS



1 230€

THE TEAM



Dr. José Figueiredo

ORAL SURGEON

Dr. Luís Mesquita Santos

ORAL SURGEON



LMS | JF

ORAL SURGERY



For more info, contact:

rod@boneeasy.com